



# County of Santa Barbara Planning and Development

Glenn S. Russell, Ph.D., Director

Dianne Black, Director of Development Services

Jeffrey S. Hunt, Director Long Range Planning

<b>SUBJECT:</b> Eaves, open clarification	<b>DATE:</b> 6/13/2012
<b>BULLETIN NO.</b> BC-2012-004 Eaves, clarification of High Fire stds.	<b>EFFECTIVE THE ABOVE DATE, ALL PREVIOUS POLICIES ON THIS SUBJECT ARE SUPERCEDED</b>
<b>FROM: MASSOUD ABOLHODA, BUILDING OFFICIAL</b>	

## CODE REFERENCE (S):

- California Residential Code Section R327.7.4
- California Building Code Chapter 7A

## BACKGROUND:

The new code allows for use of heavy timber in lieu of one hour construction of eave overhang in Fire Hazard Severity Zone within SRA or Wildland Urban Interface Fire Areas. The purpose of this advisory is to provide guidance on application of this code section through typical details.

## GUIDELINE/ INTERPRETATION:

The R327.7.4 reads as follows:

*R327.7.4 Open Roof Eaves. The exposed roof deck on the underside of unenclosed roof eaves shall consist of one of the following:*

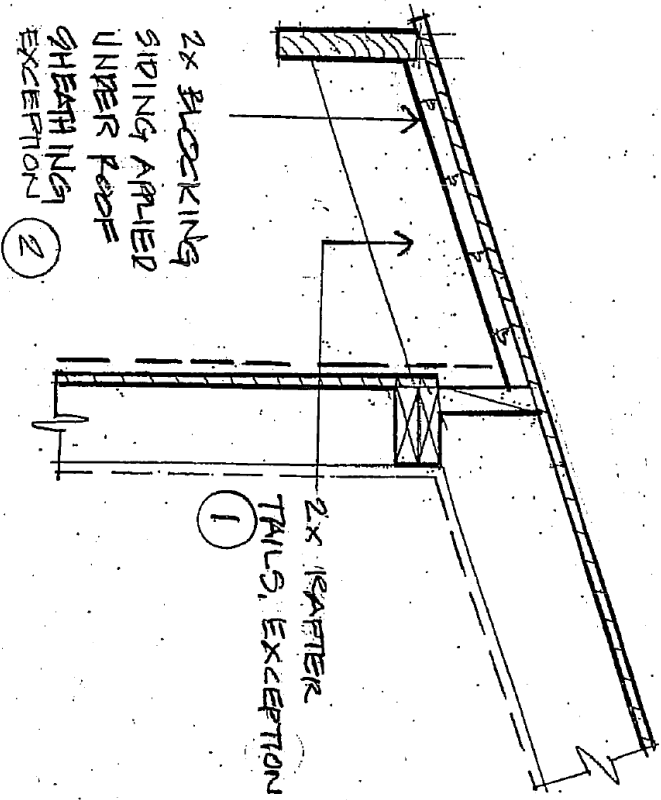
1. *Noncombustible material.*
2. *Ignition-resistant material.*
3. *One layer of 5/8" Type "X" gypsum sheathing applied behind an exterior covering on the underside of exterior of roof deck.*
4. *The exterior portion of a 1-hour fire resistive exterior wall assembly applied to the underside of the roof deck designed for exterior fire exposed including assemblies using the gypsum panel and sheathing products listed in the Gypsum Association Fire Resistive Design Manual.*

*Exception: The following materials do not require protection:*

1. *Solid wood rafter tails on the exposed underside of the open roof eaves having a minimum nominal dimension of 2 inch (50.8mm).*
2. *Solid wood blocking installed between rafter tails on the exposed underside of open eaves having a minimum nominal dimension of 2 inch (50.8mm).*
3. *Gable end overhangs and roof assembly projections beyond an exterior wall other than at the lower end of the rafter tails.*
4. *Fascia and other architectural trim boards.*

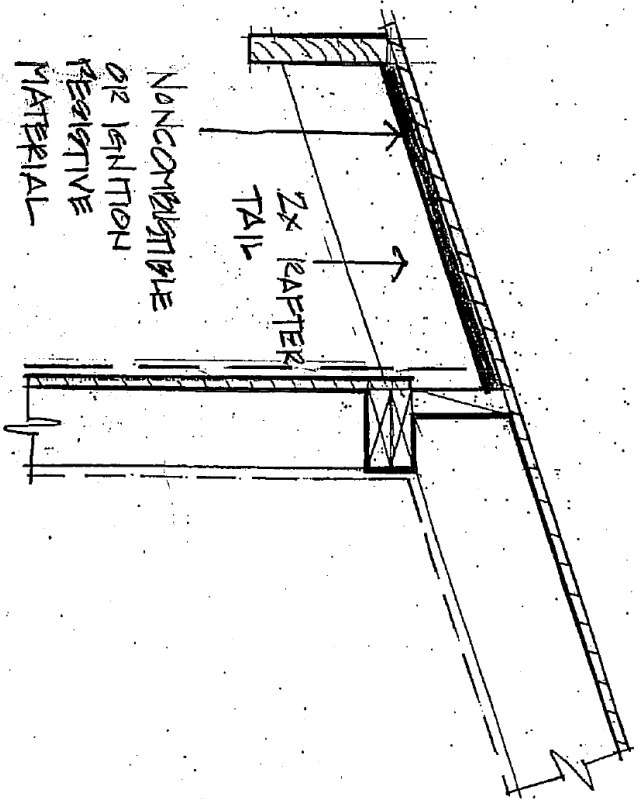
**Discussion:** One of the fundamental criteria in Heavy Timber construction is to prohibit enclosed spaces. Chapter 7A and Section R327.7.4 recognize Heavy Timber construction, in addition to one of the other possible performance methods in figures 1 and 2 below, as meeting fire-resistivity of overhangs. Figures 1 and 2 are illustrations of exceptions 1 and 2 of the above code sections. Please note that exception 2 requires two inches of solid blocking. In Figure 1, this has been shown as 2 inch T & G decking. Figures 2 to 4 are typical details for items 1 to 4 of section R327.7.4 and Chapter 7A.





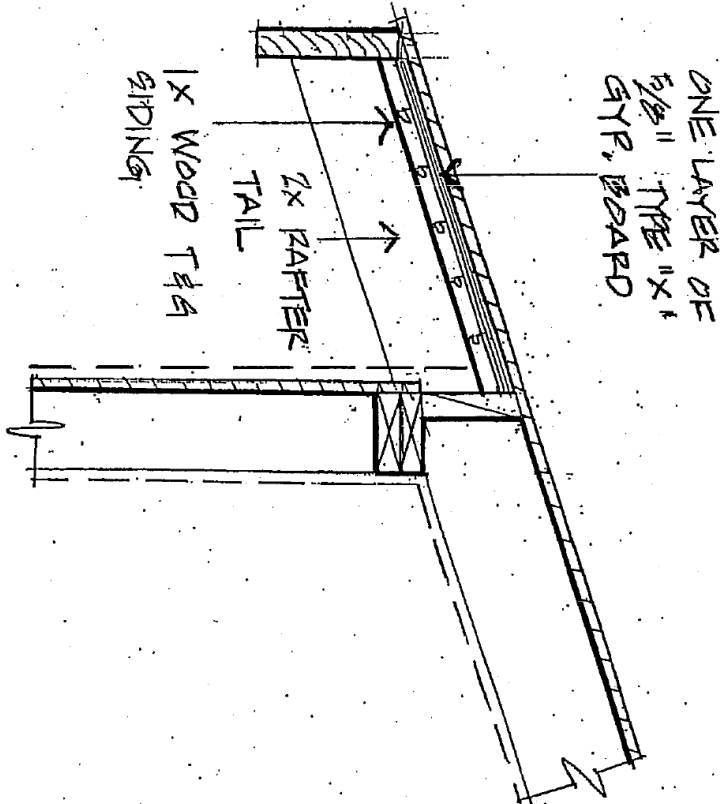
EQUIVALENT TO R327.7.4 EXCEPTION 1 OR 2, (CONCEALED SPACE ABOVE 2x BLOCKING NOT ALLOWED)

(1)



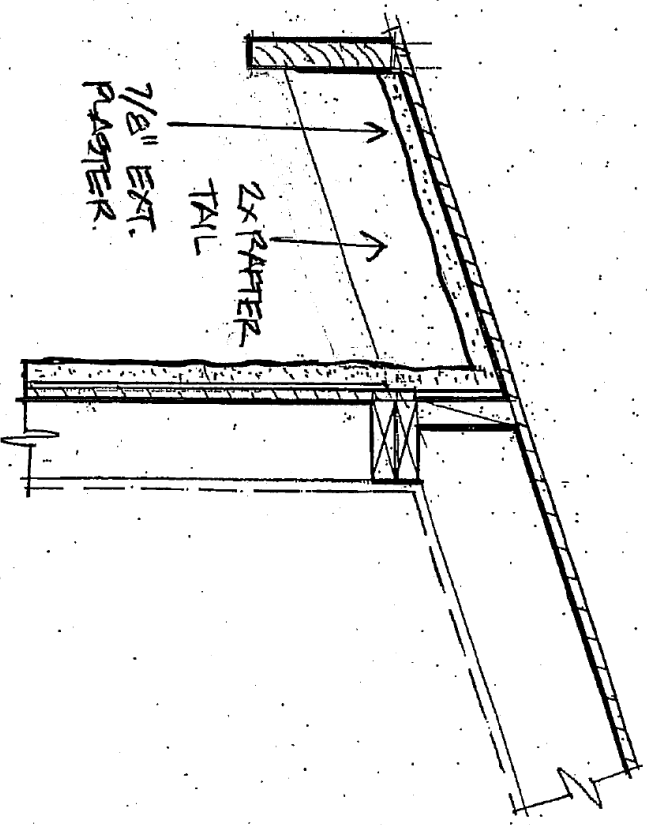
R327.7.4, ITEM 1 OR 2

(2)



(R327.7.4 ITEM 3)

3



(R327.7.4, ITEM 4)

4