

Los Alamos Community Plan Zoning

Section 35-1 of Chapter 35
Santa Barbara County Land Use & Development Code

ZONING ADOPTED BY SANTA BARBARA COUNTY BOARD OF SUPERVISORS
ON FEBRUARY 15, 2011 BY ORDINANCE #4780.
ZONING REVISED ON

RESIDENTIAL:

RR-5 Residential Ranchette, 5 Acre Minimum Lot Size

Single Family Residential

3-E-1 3 Acres (Gross) Minimum Lot Size

1-E-1 1 Acre (Gross) Minimum Lot Size

10-R-1 10,000 Sq. Ft. (Net) Minimum Lot Size

7-R-1 7,000 Sq. Ft. (Net) Minimum Lot Size

Multiple Family Residential

7-R-2 Two Family, 7,000 Sq. Ft. (Net) Minimum Lot Size

10-R-2 Two Family, 10,000 Sq. Ft. (Net) Minimum Lot Size

DR-1.8 Design Residential, 1.8 Units per Gross Acre

DR-4.6 Design Residential, 4.6 Units per Gross Acre

DR-8 Design Residential, 8 Units per Gross Acre

PRD-46 Planned Residential Development, 46 Units

MHP Mobile Home Park

COMMERCIAL:

CM-LA Community Mixed Use - Los Alamos

C-1 Limited Commercial

C-2 Retail Commercial

C-3 General Commercial

CH Highway Commercial

PI Professional and Institutional

INDUSTRIAL:

M-1 Light Industry

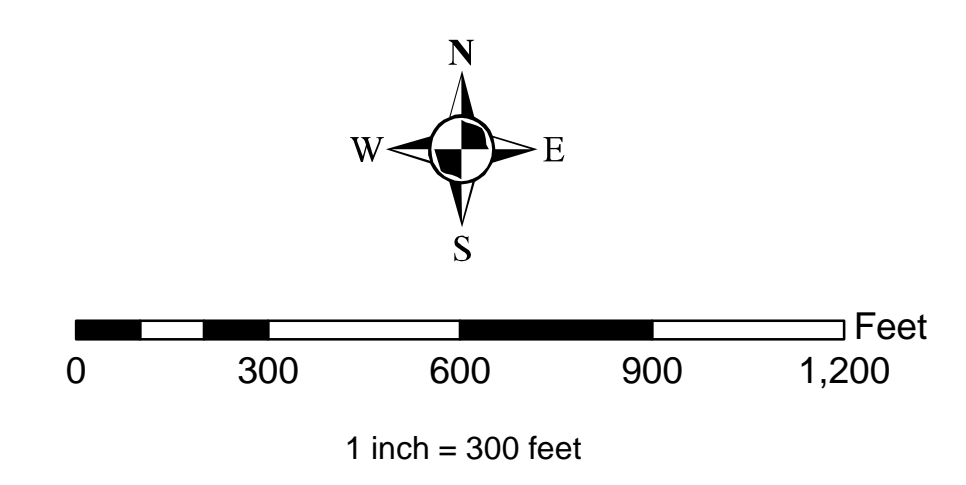
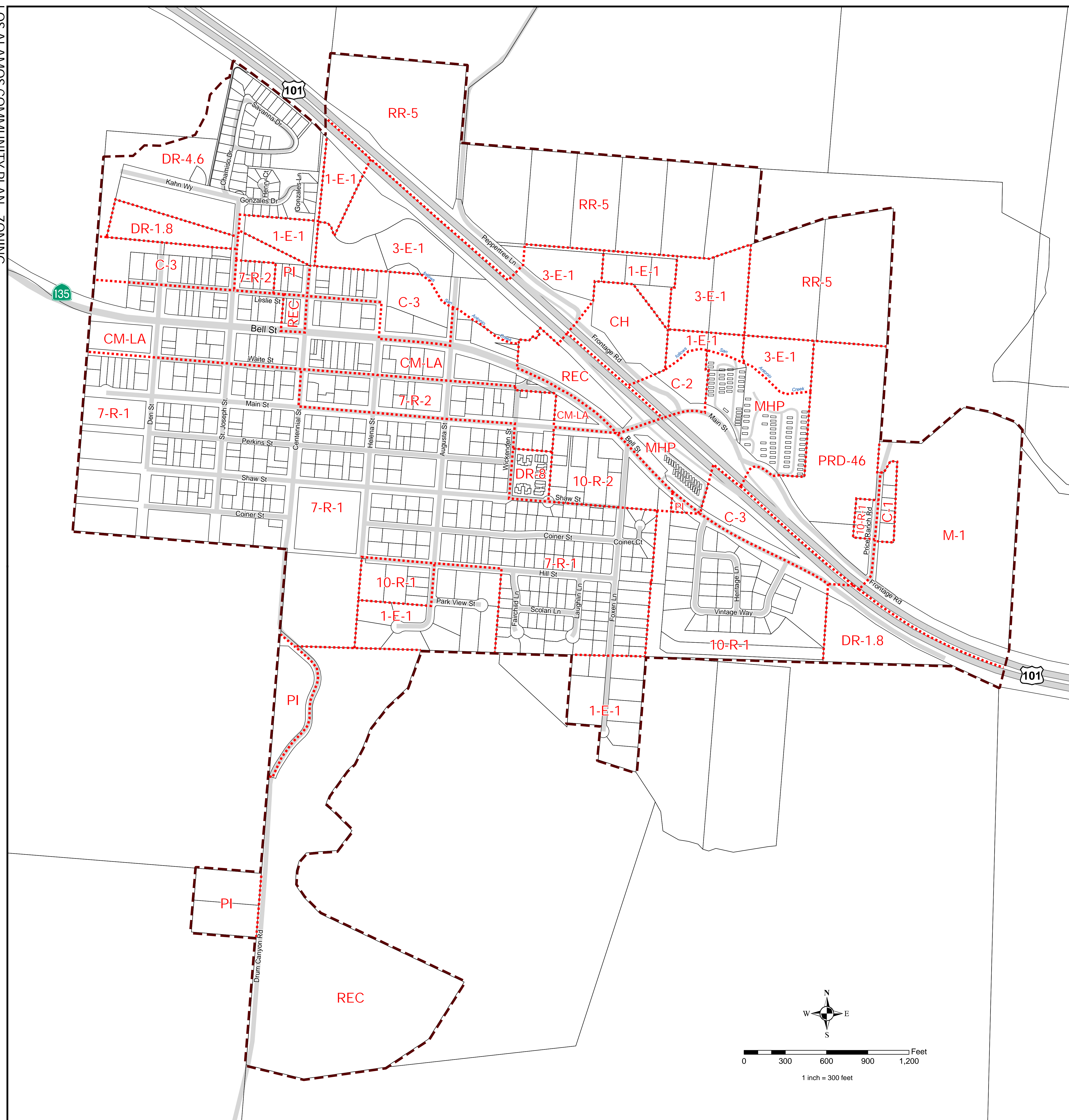
OPEN LAND USES:

REC Recreation

BOUNDARY LINES:

 Zoning Boundary

 Community Plan Boundary



LOS ALAMOS COMMUNITY PLAN - ZONING

LOS ALAMOS COMMUNITY PLAN - ZONING